

*LI
RX*

CRTV | SCTY

*Collectively
Created*

*Individually
Expressed*

*Reg. No.
3-528-874*

EST. 2007



SPRING // 2019





LIRA is a lifestyle brand that has set out to assemble an institute that cultivates creativity. A culmination of efforts have led to the establishment of LIRA's CREATIVE SOCIETY

A community that influences their generation by sharing the expressive talents of athletes, artist, musicians, designers, and photographers.

LIRA's plan is to broaden the view of fashion in the action sports market by integrating the personality of the creative culture. LIRA's ability to consistently evolve with the collective consciousness of the consumer enables them to venture beyond the boundaries of traditional action sports apparel.

Rooted in Southern California, LIRA's designs unify a curated mix of expression from the surf, skate, and street culture. LIRA is about connecting, engaging, and celebrating with its creative collaborators; elevating the lifestyle they represent.

LIRA is Collectively Created, Individually Expressed.





LS0900 SHAUNI TOP

PINK
XS - L | 95% POLYESTER 5% SPANDEX
USA: w/s \$20 msrp \$40 CAN: w/s \$23 msrp \$46



LS0901 SUMMER CHEEKY BOTTOM

PINK
XS - L | 95% POLYESTER 5% SPANDEX
USA: w/s \$19 msrp \$38 CAN: w/s \$22.50 msrp \$45



LS0902 SASHA ONE PIECE

PINK
XS - L | 95% POLYESTER 5% SPANDEX
USA: w/s \$38 msrp \$76 CAN: w/s \$42.50 msrp \$85







LS0900 SHAUNI TOP

PEARL
XS - L | 95% POLYESTER 5% SPANDEX
USA: w/s \$20 msrp \$40 CAN: w/s \$23 msrp \$46



LS0901 SUMMER CHEEKY BOTTOM

PEARL
XS - L | 95% POLYESTER 5% SPANDEX
USA: w/s \$19 msrp \$38 CAN: w/s \$22.50 msrp \$45



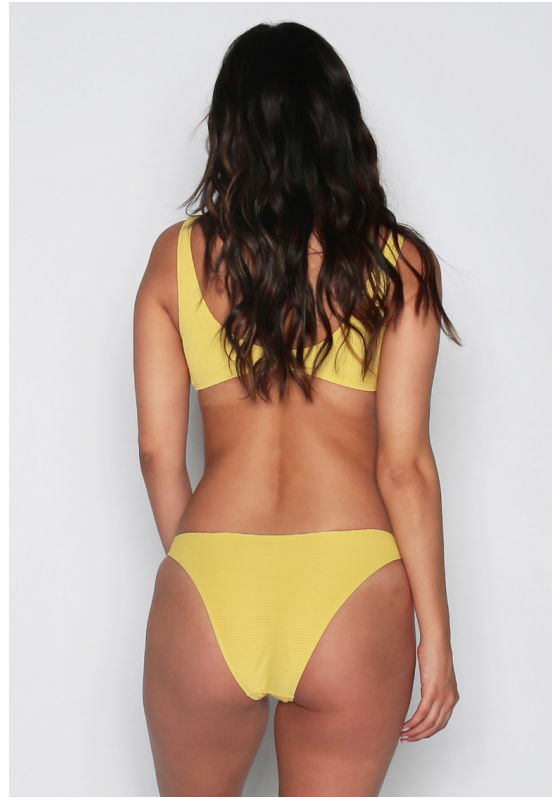
LS0902 SASHA ONE PIECE

PEARL
XS - L | 95% POLYESTER 5% SPANDEX
USA: w/s \$38 msrp \$76 CAN: w/s \$42.50 msrp \$85



LS0904 DONNA TOP

CHARTREUS
XS - L | 90% NYLON 10% SPANDEX RIB
USA: w/s \$20 msrp \$40 CAN: w/s \$23 msrp \$46



LS0905 JENNA BOTTOM

CHARTREUS
XS - L | 90% NYLON 10% SPANDEX RIB
USA: w/s \$19 msrp \$38 CAN: w/s \$22.50 msrp \$45



LS0906 LANI ONE PIECE

CHARTREUS
XS - L | 90% NYLON 10% SPANDEX RIB
USA: w/s \$34 msrp \$68 CAN: w/s \$40 msrp \$80









LS0904 DONNA TOP

MIDNIGHT
XS - L | 90% NYLON 10% SPANDEX RIB
USA: w/s \$20 msrp \$40 CAN: w/s \$23 msrp \$46



LS0905 JENNA BOTTOM

MIDNIGHT
XS - L | 90% NYLON 10% SPANDEX RIB
USA: w/s \$19 msrp \$38 CAN: w/s \$22.50 msrp \$45



LS0906 LANI ONE PIECE

MIDNIGHT
XS - L | 90% NYLON 10% SPANDEX RIB
USA: w/s \$34 msrp \$68 CAN: w/s \$40 msrp \$80







LS0912 BRODY REVERSIBLE TOP

BLACK

XS - L | 82% POLYESTER 18% SPANDEX

USA: w/s \$20 msrp \$40 CAN: w/s \$23 msrp \$46



LS0914 NEELY REVERSIBLE MID BOTTOM

BLACK

XS - L | 82% POLYESTER 18% SPANDEX

USA: w/s \$19 msrp \$38 CAN: w/s \$22.50 msrp \$45



LS0913 IBIZA TOP

BLACK

XS - L | 82% POLYESTER 18% SPANDEX

USA: w/s \$25 msrp \$50 CAN: w/s \$27.50 msrp \$55



LS0915 QUINN REVERSIBLE CHEEKY BOTTOM

BLACK

XS - L | 82% POLYESTER 18% SPANDEX

USA: w/s \$19 msrp \$38 CAN: w/s \$22.50 msrp \$45





LS0916 MARSEILLE REVERSIBLE ONE PIECE

BLACK
XS - L | 82% POLYESTER 18% SPANDEX
USA: w/s \$34 msrp \$68 CAN: w/s \$40 msrp \$80



LS0916 MARSEILLE REVERSIBLE ONE PIECE

RED OCHRE
XS - L | 82% POLYESTER 18% SPANDEX
USA: w/s \$34 msrp \$68 CAN: w/s \$40 msrp \$80



LS0912 BRODY REVERSIBLE TOP

RED OCHRE
XS - L | 82% POLYESTER 18% SPANDEX
USA: w/s \$20 msrp \$40 CAN: w/s \$23 msrp \$46



LS0914 NEELY REVERSIBLE MID BOTTOM

RED OCHRE
XS - L | 82% POLYESTER 18% SPANDEX
USA: w/s \$19 msrp \$38 CAN: w/s \$22.50 msrp \$45



LS0913 IBIZA TOP

RED OCHRE
XS - L | 82% POLYESTER 18% SPANDEX
USA: w/s \$25 msrp \$50 CAN: w/s \$27.50 msrp \$55



LS0915 QUINN REVERSIBLE CHEEKY BOTTOM

RED OCHRE
XS - L | 82% POLYESTER 18% SPANDEX
USA: w/s \$19 msrp \$38 CAN: w/s \$22.50 msrp \$45







LS0917 LOGAN REVERSIBLE TOP

NATURAL
XS - L | 82% POLYESTER 18% SPANDEX
USA: w/s \$21 msrp \$42 CAN: w/s \$25 msrp \$50



LS0920 REESE REVERSIBLE CHEEKY BOTTOM

NATURAL
XS - L | 82% POLYESTER 18% SPANDEX
USA: w/s \$19 msrp \$38 CAN: w/s \$22.50 msrp \$45



LS0918 MONROE REVERSIBLE TOP

NATURAL
XS - L | 82% POLYESTER 18% SPANDEX
USA: w/s \$20 msrp \$40 CAN: w/s \$23 msrp \$46



LS0919 MARCO REVERSIBLE FULL BOTTOM

NATURAL
XS - L | 82% POLYESTER 18% SPANDEX
USA: w/s \$19 msrp \$38 CAN: w/s \$22.50 msrp \$45



LS0921 ALLI REVERSIBLE ONE PIECE

RUST

XS - L | 82% POLYESTER 18% SPANDEX

USA: w/s \$38 msrp \$76 **CAN:** w/s \$42.50 msrp \$85



LS0921 ALLI REVERSIBLE ONE PIECE

NATURAL

XS - L | 82% POLYESTER 18% SPANDEX

USA: w/s \$38 msrp \$76 **CAN:** w/s \$42.50 msrp \$85







LS0917 LOGAN REVERSIBLE TOP

RUST

XS - L | 82% POLYESTER 18% SPANDEX

USA: w/s \$21 msrp \$42 CAN: w/s \$25 msrp \$50



LS0920 REESE REVERSIBLE CHEEKY BOTTOM

RUST

XS - L | 82% POLYESTER 18% SPANDEX

USA: w/s \$19 msrp \$38 CAN: w/s \$22.50 msrp \$45



LS0918 MONROE REVERSIBLE TOP

RUST

XS - L | 82% POLYESTER 18% SPANDEX

USA: w/s \$20 msrp \$40 CAN: w/s \$23 msrp \$46



LS0919 MARCO REVERSIBLE FULL BOTTOM

RUST

XS - L | 82% POLYESTER 18% SPANDEX

USA: w/s \$19 msrp \$38 CAN: w/s \$22.50 msrp \$45



LS0907 LEIGH REVERSIBLE TOP

LILAC
XS - L | 82% POLYESTER 18% SPANDEX
USA: w/s \$21 msrp \$42 CAN: w/s \$25 msrp \$50



LS0910 BROOKE REVERSIBLE CHEEKY BOTTOM

LILAC
XS - L | 82% POLYESTER 18% SPANDEX
USA: w/s \$19 msrp \$38 CAN: w/s \$22.50 msrp \$45



LS0908 TAYLOR TOP

LILAC
XS - L | 82% POLYESTER 18% SPANDEX
USA: w/s \$20 msrp \$40 CAN: w/s \$23 msrp \$46



LS0909 GINA REVERSIBLE FULL BOTTOM

LILAC
XS - L | 82% POLYESTER 18% SPANDEX
USA: w/s \$19 msrp \$38 CAN: w/s \$22.50 msrp \$45







LS0911 PARKER REVERSIBLE ONE PIECE

LILAC

XS - L | 82% POLYESTER 18% SPANDEX

USA: w/s \$35 msrp \$70 CAN: w/s \$40 msrp \$80



LS0911 PARKER REVERSIBLE ONE PIECE

BLUSH

XS - L | 82% POLYESTER 18% SPANDEX

USA: w/s \$35 msrp \$70 CAN: w/s \$40 msrp \$80



LS0907 LEIGH REVERSIBLE TOP

BLUSH
XS - L | 82% POLYESTER 18% SPANDEX
USA: w/s \$21 msrp \$42 CAN: w/s \$25 msrp \$50



LS0910 BROOKE REVERSIBLE CHEEKY BOTTOM

BLUSH
XS - L | 82% POLYESTER 18% SPANDEX
USA: w/s \$19 msrp \$38 CAN: w/s \$22.50 msrp \$45



LS0908 TAYLOR TOP

BLUSH
XS - L | 82% POLYESTER 18% SPANDEX
USA: w/s \$20 msrp \$40 CAN: w/s \$23 msrp \$46



LS0909 GINA REVERSIBLE FULL BOTTOM

BLUSH
XS - L | 82% POLYESTER 18% SPANDEX
USA: w/s \$19 msrp \$38 CAN: w/s \$22.50 msrp \$45





JC3402 YASMINE COVERUP

BLACK | IVORY
OSFA | 100% VISCOSE

USA: w/s \$28 msrp \$56 CAN: w/s \$32.50 msrp \$65



JC3401 ERIKA COVERUP

BLACK | IVORY
XS/S, M/L | 100% POLYESTER

USA: w/s \$22 msrp \$44 CAN: w/s \$25 msrp \$50



JC3400 BLEETH COVERUP

BLACK | NUDE
XS/S, M/L | 100% NYLON

USA: w/s \$28 msrp \$56 CAN: w/s \$32.50 msrp \$65





SALES CONTACTS

LIRA CLOTHING
1169 N. KNOLLWOOD CIR.
ANAHEIM, CA 92801
O. 714-676-8624

BRIAN BARLOW
NATIONAL SALES MGR
D. 562-889-2717
barlow@liraclimbing.com

AMELIA RENAUD
CALIFORNIA & NEVADA
C. 714.931.5896
amelia.n.renaud@gmail.com

EVA HUME
PACIFIC NORTHWEST
C. 303.886.7791
eva@whitefangsales.com

TYTUS FRIAR
ROCKIES
C. 303.884.0368
tytusfriar@mac.com

LAUREN BERTOLINO
NORTH EAST & TRI STATE
C. 917.226.8763
lauren@soloshowroom.com

RYAN LANGHORNE
SOUTHEAST & S. MID ATLANTIC
C. 321.795.5892
r.langhorne1@gmail.com

KRISTEN GEISSINGER
MID WEST
C. 402-637-3114
kristen@soloshowroom.com

JENNIFER SHERIDAN
HAWAII
C. 808.780.5764
jenniferesheridan@gmail.com

INTERNATIONAL

LIRA CANADA INC.
1443 RUE BEGIN,
SAINT-LAURENT QC H4R 1V8
CANADA (LIRA)
O. 877-507-5472

MARC-A. SAUCIER
CANADIAN SALES MGR
O. 877-507-5472
marc@liraclimbing.com

JON H. GENIER
QUEBEC & MARITIME
C. 450.542.0396
jonh@agencejg.com

J.S. Weir
WESTERN CANADA
C. 778.320.9347
js@waydangerous.com

